

PPP2R2A Antibody (N-term)
Purified Rabbit Polyclonal Antibody (Pab)
Catalog # AP21237a

Specification

PPP2R2A Antibody (N-term) - Product Information

Application	WB,E
Primary Accession	P63151
Reactivity	Human, Mouse, Rat
Host	Rabbit
Clonality	polyclonal
Isotype	Rabbit IgG
Calculated MW	51692

PPP2R2A Antibody (N-term) - Additional Information

Gene ID 5520

Other Names

Serine/threonine-protein phosphatase 2A 55 kDa regulatory subunit B alpha isoform, PP2A subunit B isoform B55-alpha, PP2A subunit B isoform PR55-alpha, PP2A subunit B isoform R2-alpha, PP2A subunit B isoform alpha, PPP2R2A

Target/Specificity

This PPP2R2A antibody is generated from a rabbit immunized with a KLH conjugated synthetic peptide between 126-160 amino acids from the N-terminal region of human PPP2R2A.

Dilution

WB~~1:2000

E~~Use at an assay dependent concentration.

Format

Purified polyclonal antibody supplied in PBS with 0.09% (W/V) sodium azide. This antibody is purified through a protein A column, followed by peptide affinity purification.

Storage

Maintain refrigerated at 2-8°C for up to 2 weeks. For long term storage store at -20°C in small aliquots to prevent freeze-thaw cycles.

Precautions

PPP2R2A Antibody (N-term) is for research use only and not for use in diagnostic or therapeutic procedures.

PPP2R2A Antibody (N-term) - Protein Information

Name PPP2R2A

Function Substrate-recognition subunit of protein phosphatase 2A (PP2A) that plays a key role in

cell cycle by controlling mitosis entry and exit (PubMed:[1849734](#), PubMed:[33108758](#)). Involved in chromosome clustering during late mitosis by mediating dephosphorylation of MKI67 (By similarity). Essential for serine/threonine-protein phosphatase 2A- mediated dephosphorylation of WEE1, preventing its ubiquitin-mediated proteolysis, increasing WEE1 protein levels, and promoting the G2/M checkpoint (PubMed:[33108758](#)).

Tissue Location

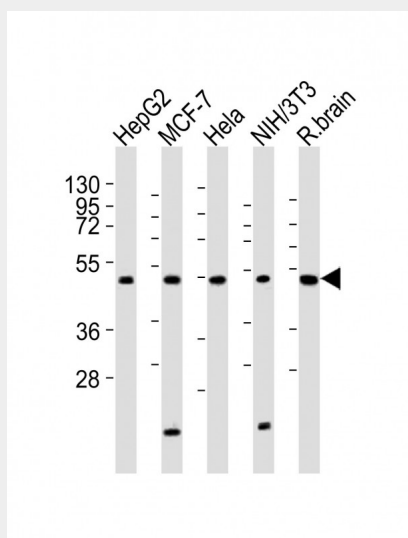
Expressed in all tissues examined.

PPP2R2A Antibody (N-term) - Protocols

Provided below are standard protocols that you may find useful for product applications.

- [Western Blot](#)
- [Blocking Peptides](#)
- [Dot Blot](#)
- [Immunohistochemistry](#)
- [Immunofluorescence](#)
- [Immunoprecipitation](#)
- [Flow Cytometry](#)
- [Cell Culture](#)

PPP2R2A Antibody (N-term) - Images



All lanes : Anti-PPP2R2A Antibody (N-term) at 1:2000 dilution Lane 1: HepG2 whole cell lysates Lane 2: MCF-7 whole cell lysates Lane 3: HeLa whole cell lysates Lane 4: NIH/3T3 whole cell lysates Lane 5: rat brain lysates Lysates/proteins at 20 µg per lane. Secondary Goat Anti-Rabbit IgG, (H+L), Peroxidase conjugated at 1/10000 dilution Predicted band size : 52 kDa Blocking/Dilution buffer: 5% NFDN/TBST.

PPP2R2A Antibody (N-term) - Background

The B regulatory subunit might modulate substrate selectivity and catalytic activity, and also might direct the localization of the catalytic enzyme to a particular subcellular compartment.

PPP2R2A Antibody (N-term) - References

Mayer R.E.,et al.Biochemistry 30:3589-3597(1991).
Ota T.,et al.Nat. Genet. 36:40-45(2004).
Nusbaum C.,et al.Nature 439:331-335(2006).
Mural R.J.,et al.Submitted (SEP-2005) to the EMBL/GenBank/DDBJ databases.
Li H.H.,et al.EMBO J. 26:402-411(2007).

PPP2R2A Antibody (N-term) - Citations

- [PP2A-B55 and its adapter proteins IER2 and IER5 regulate the activity of RB family proteins and the expression of cell cycle-related genes](#)